

**Standard with options:**

H325, H345, H385, H415, F360, DE29, DE32, DE35, DE38,  
DE41, M41a, VA37, VA44

**Wirecolors, unless otherwise noted:**

red (rd): DC +  
black (bk): DC-

brown (bn): AC L  
blue (bu): AC N  
green/yellow (gnye): AC ground

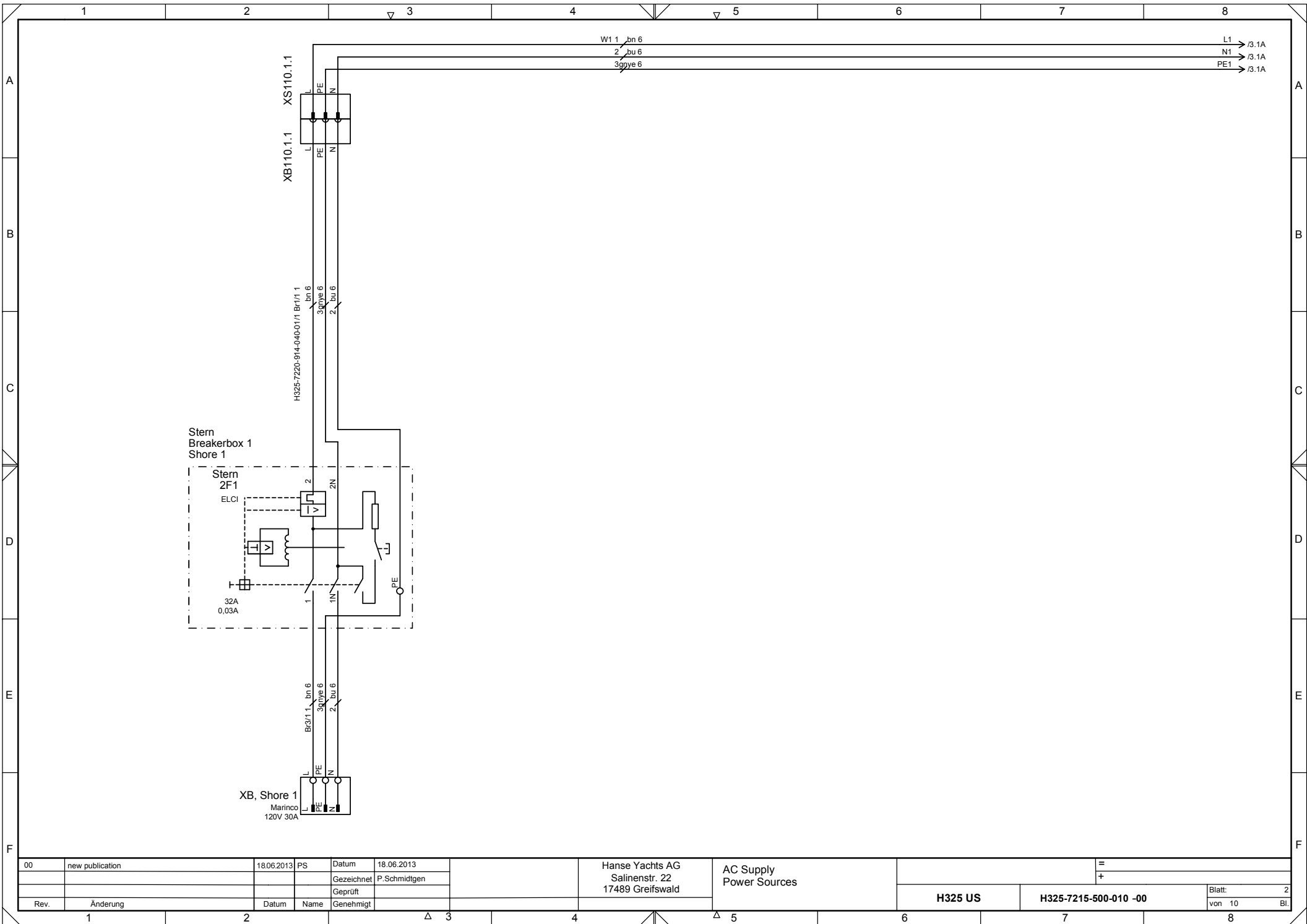
**Wire crossections, unless otherwise noted:**  
1,5mm<sup>2</sup> [AWG15(1,65mm<sup>2</sup>)-AWG16(1,31mm<sup>2</sup>)]

**Fuse values** are chosen according to ISO 10133 and cable manufacturers recommendation, using 70 degC isolation temperature and 30 degC ambient temperature  
For wires through engine rooms, current got reduced by a factor of 0,75 for ambient temperatures up to 60 degC

1,5mm<sup>2</sup>: 18A, fuse=16A  
2,5mm<sup>2</sup>: 26A, fuse=25A  
4,0mm<sup>2</sup>: 35A, fuse=25A  
6,0mm<sup>2</sup>: 44A, fuse=35A  
10mm<sup>2</sup>: 61A, fuse=50A  
16mm<sup>2</sup>: 82A, fuse=80A

The values above are for informational purposes only, legally binding is the actual ISO10133 standard in force at date of production of the vessel

00	new publication	18.06.2013	PS	Datum	18.06.2013	Hanse Yachts AG Salinenstr. 22 17489 Greifswald	Circuitdiagrams US-vessels General remarks	=	Blatt: 1			
				Gezeichnet	P.Schmidgen					H325 US	H325-7215-500-010 -00	von 10
				Geprüft								
Rev.	Anderung	Datum	Name	Genehmigt								



00	new publication	18.06.2013	PS	Datum	18.06.2013
				Gezeichnet	P.Schmidtgen
				Geprüft	
Rev.	Änderung	Datum	Name	Genehmigt	

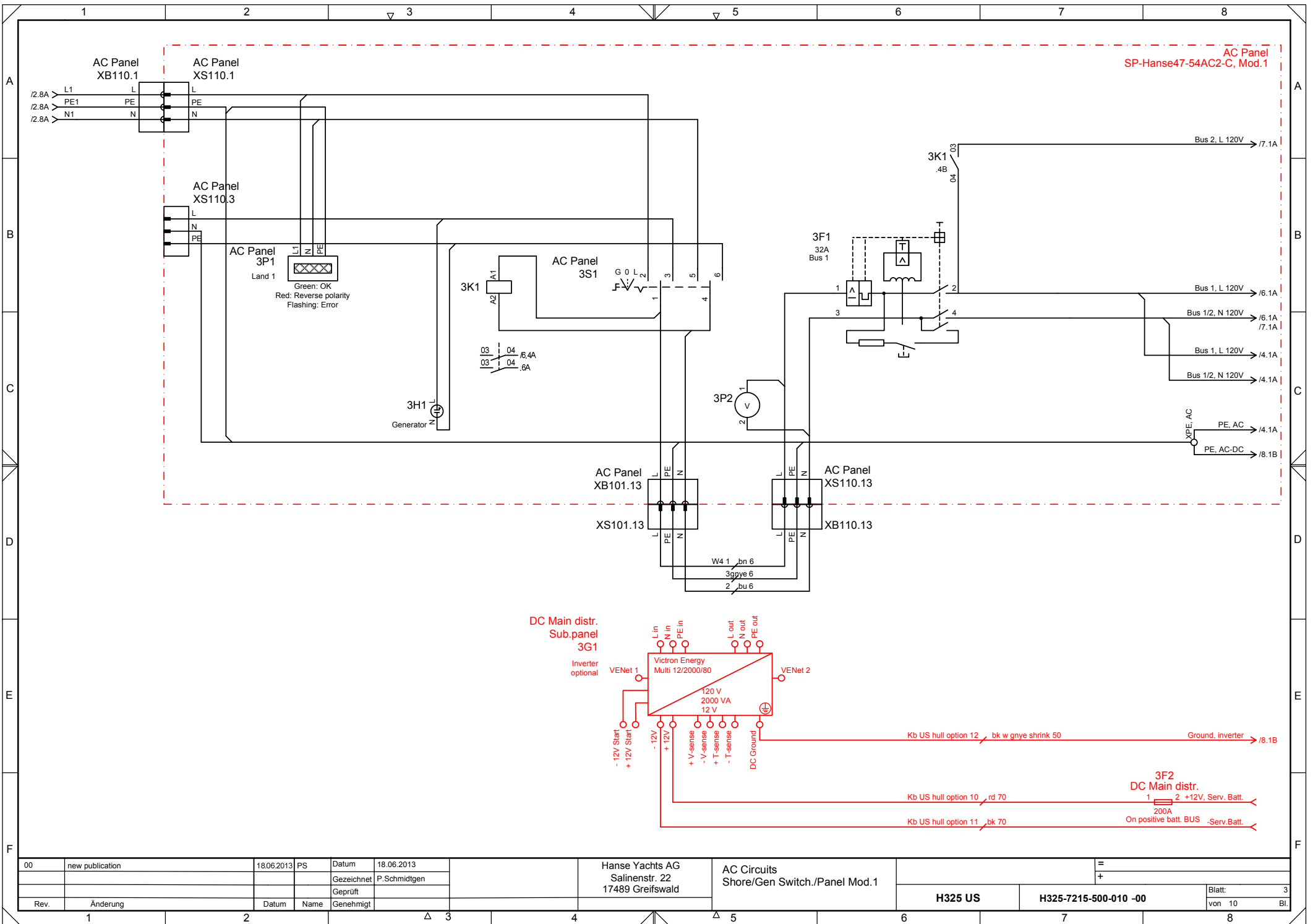
Hanse Yachts AG  
Salinenstr. 22  
17489 Greifswald

AC Supply  
Power Sources

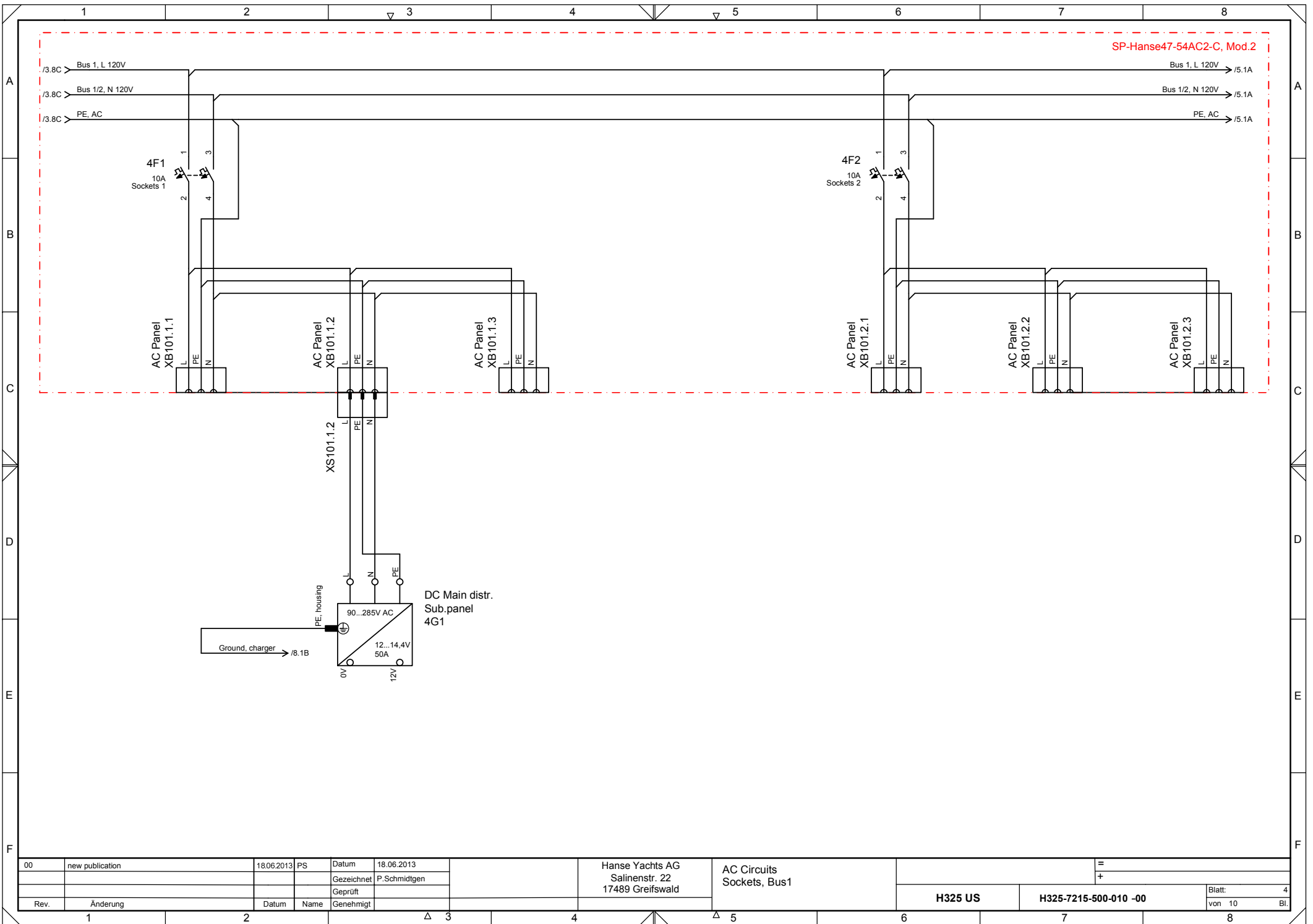
H325 US

H325-7215-500-010 -00

Blatt: 2  
von 10 Bl.

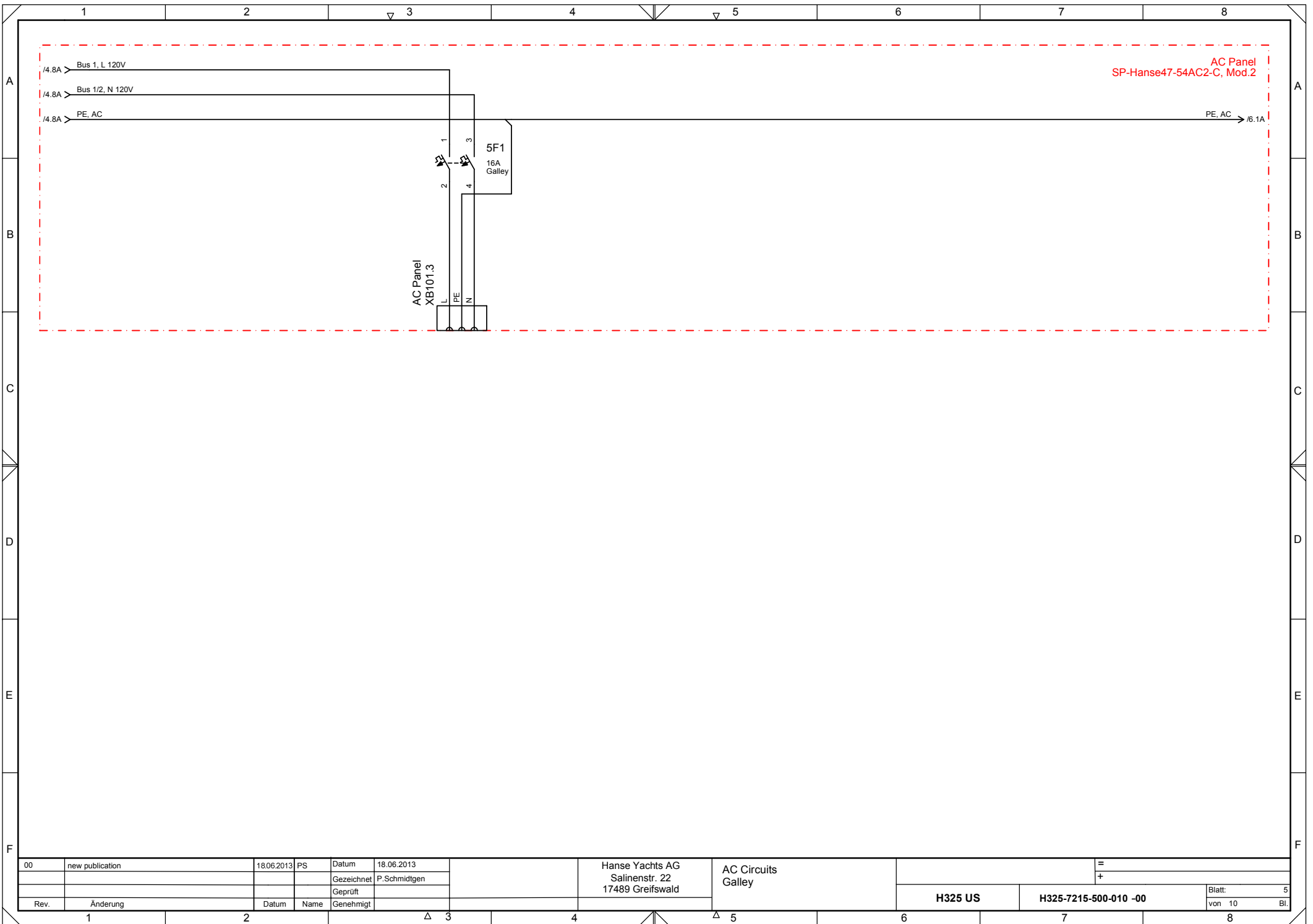


00	new publication	18.06.2013	PS	Datum	18.06.2013	Hanse Yachts AG Salinenstr. 22 17489 Greifswald	AC Circuits Shore/Gen Switch./Panel Mod.1	=	Blatt: 3			
				Gezeichnet	P.Schmidtgen					H325 US	H325-7215-500-010 -00	von 10
Rev.	Änderung	Datum	Name	Geprüft	Genehmigt							



SP-Hanse47-54AC2-C, Mod.2

00	new publication	18.06.2013	PS	Datum	18.06.2013	Hanse Yachts AG Salinenstr. 22 17489 Greifswald	AC Circuits Sockets, Bus1	=	Blatt: 4			
				Gezeichnet	P.Schmidtgen					H325 US	H325-7215-500-010 -00	von 10
				Geprüft								
Rev.	Änderung	Datum	Name	Genehmigt								



AC Panel  
SP-Hanse47-54AC2-C, Mod.2

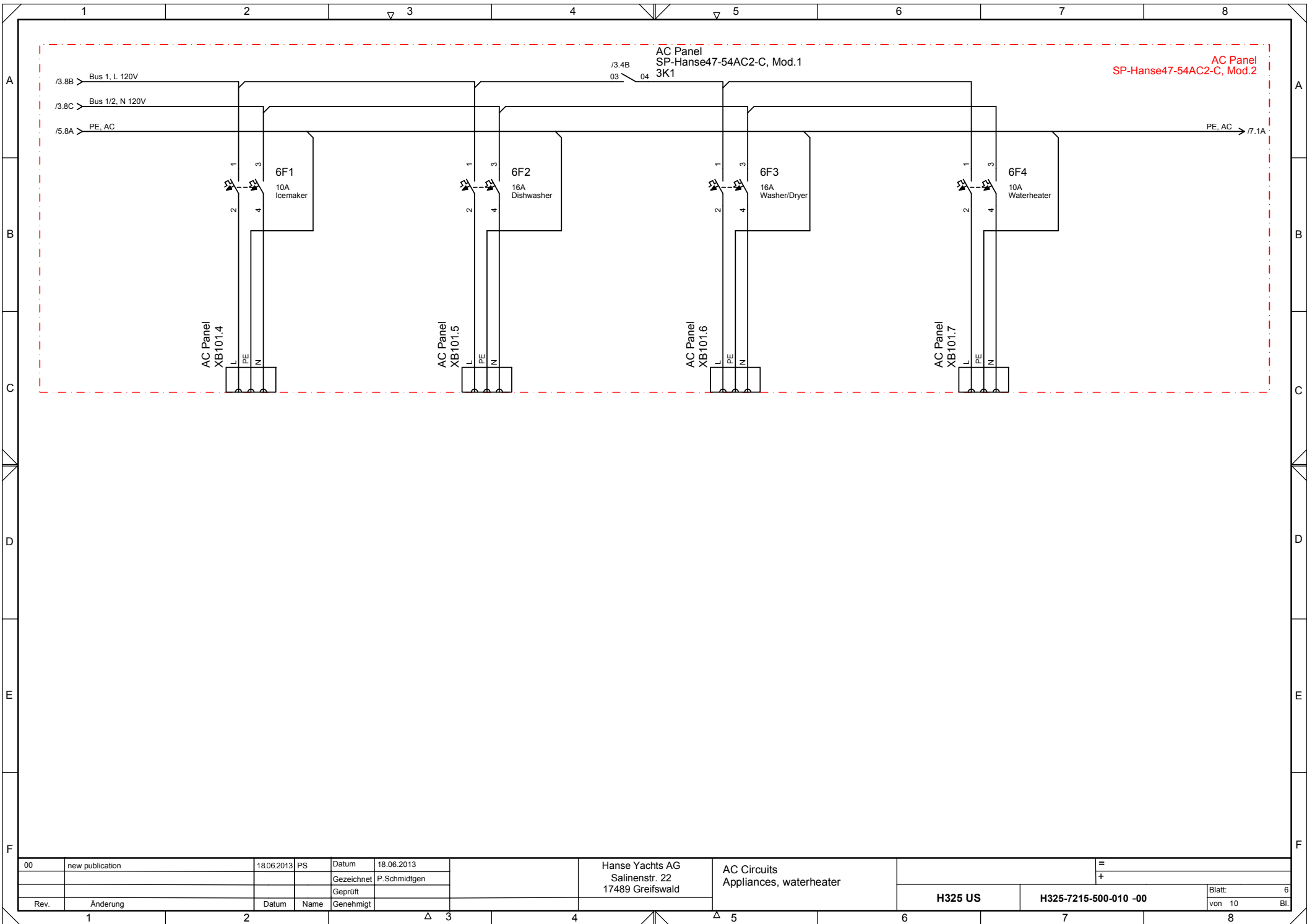
AC Panel  
XB101.3

5F1  
16A  
Galley

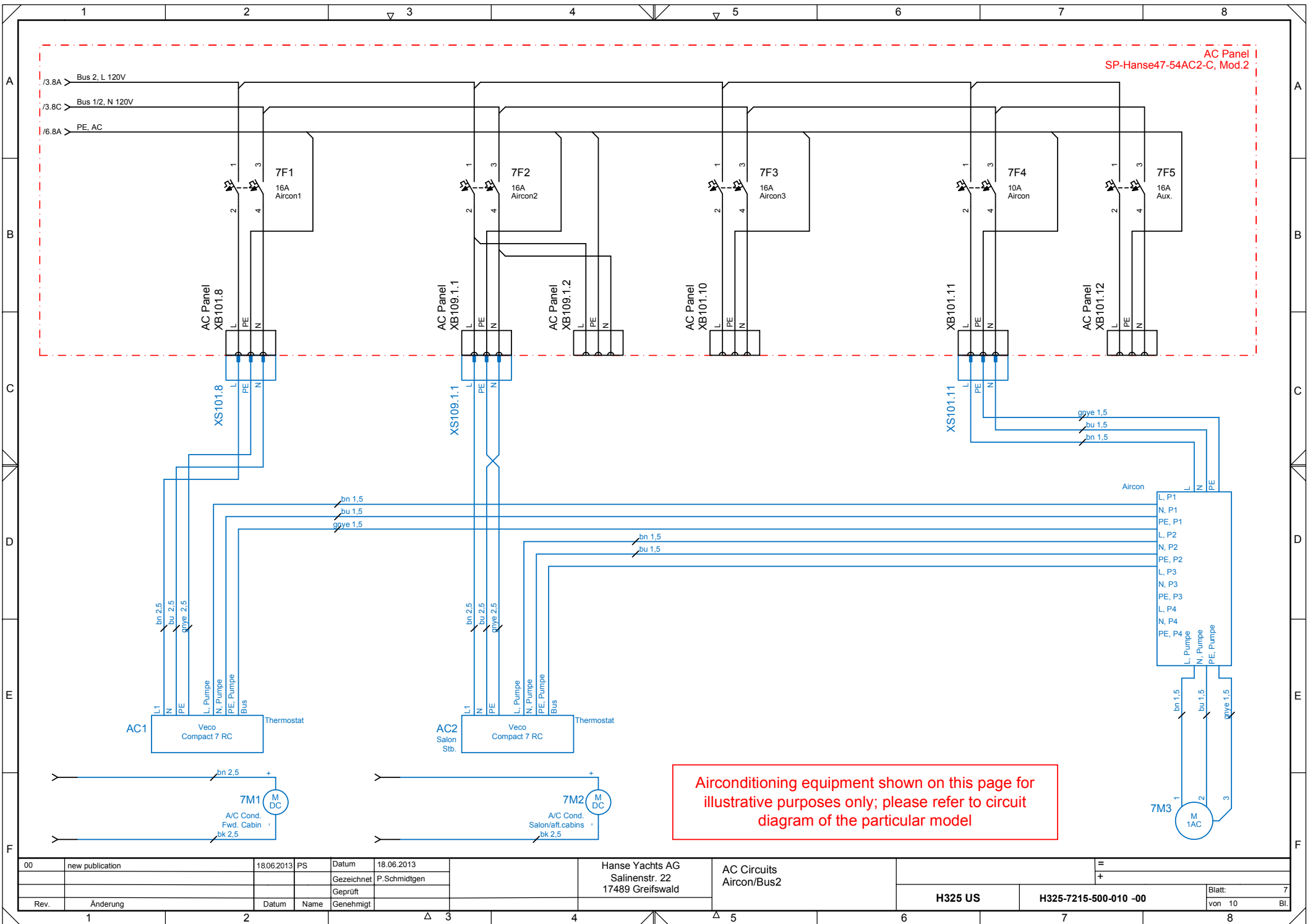
L  
PE  
N

PE, AC → /6.1A

00	new publication	18.06.2013	PS	Datum	18.06.2013	Hanse Yachts AG Salinenstr. 22 17489 Greifswald	AC Circuits Galley	=	Blatt: 5			
				Gezeichnet	P.Schmidtgen					H325 US	H325-7215-500-010 -00	von 10 Bl.
				Geprüft								
Rev.	Anderung	Datum	Name	Genehmigt								



00	new publication	18.06.2013	PS	Datum	18.06.2013	Hanse Yachts AG Salinenstr. 22 17489 Greifswald	AC Circuits Appliances, waterheater	H325 US	H325-7215-500-010 -00	Blatt: 6 von 10 Bl.
				Gezeichnet	P.Schmidtgen					
				Gepüft						
Rev.	Änderung	Datum	Name	Genehmigt						

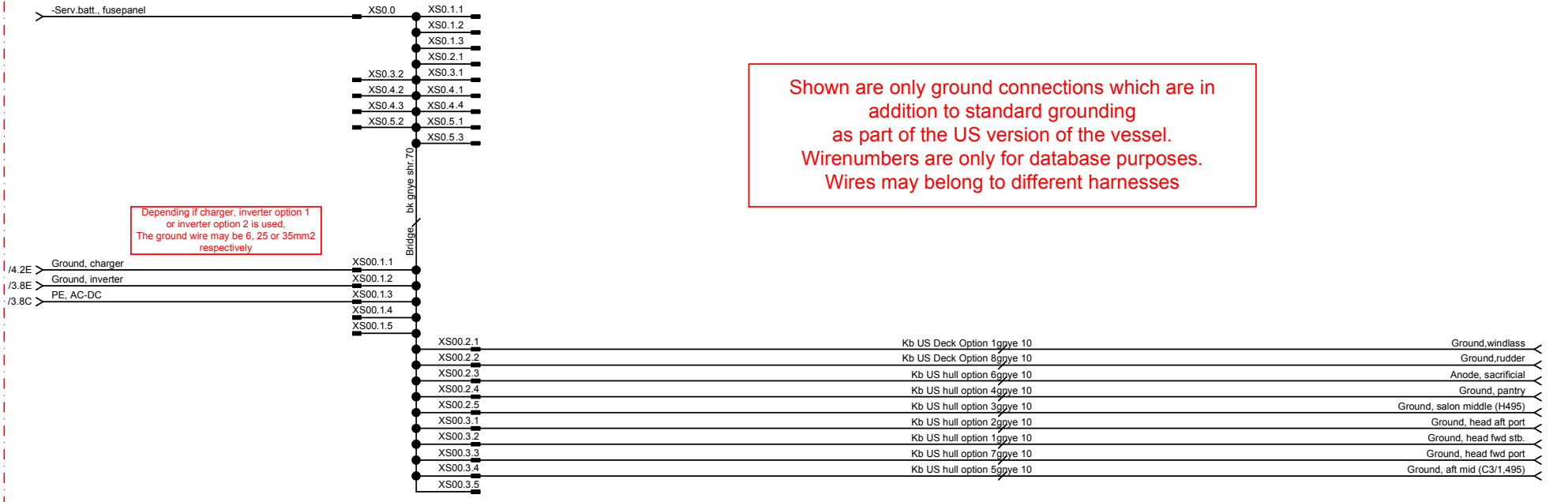


AC Panel  
SP-Hanse47-54AC2-C, Mod.2

Airconditioning equipment shown on this page for illustrative purposes only; please refer to circuit diagram of the particular model

00	new publication	18.06.2013	PS	Datum	18.06.2013	Hanse Yachts AG Salinenstr. 22 17489 Greifswald	AC Circuits Aircon/Bus2	=	+	Blatt: 7
				Gezeichnet	P.Schmidgen					
				Geprüft						
Rev.	Änderung	Datum	Name	Genehmigt						von 10 Bl.

Sub.panel  
Würth panel, large, Part 1

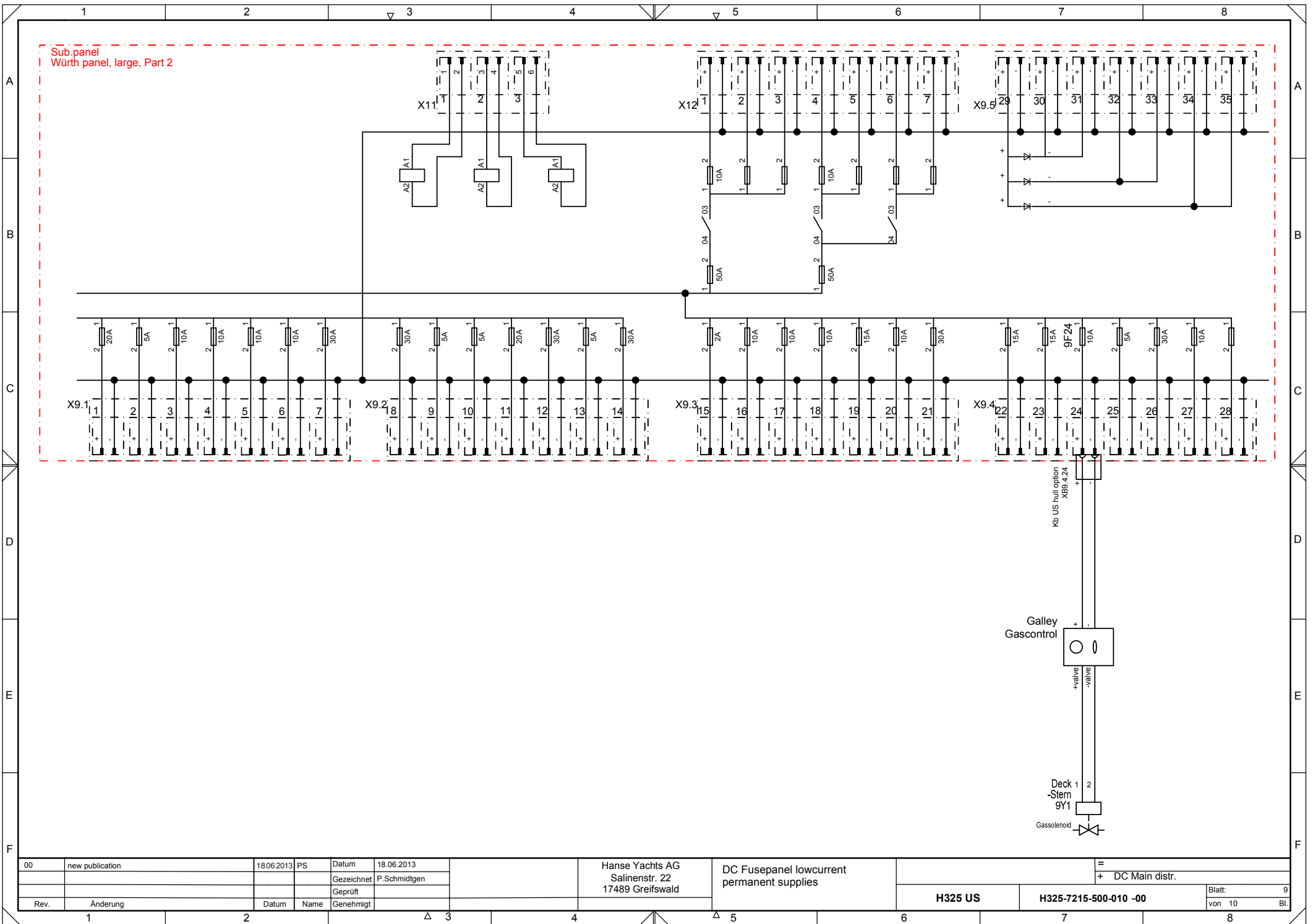


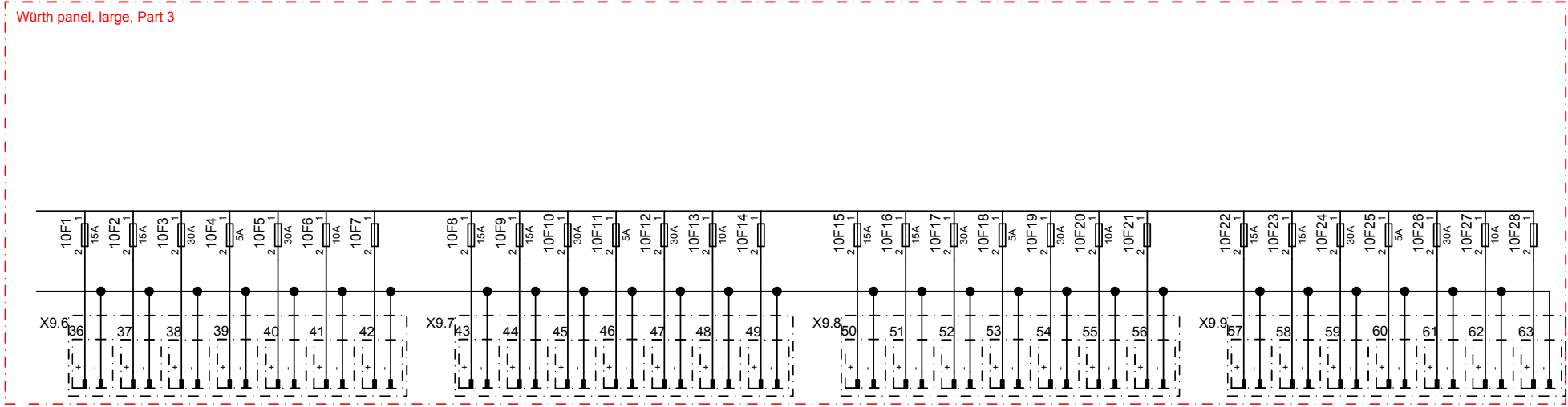
Depending if charger, inverter option 1 or inverter option 2 is used, The ground wire may be 6, 25 or 35mm2 respectively

Shown are only ground connections which are in addition to standard grounding as part of the US version of the vessel. Wirenumbers are only for database purposes. Wires may belong to different harnesses

00	new publication	18.06.2013	PS	Datum	18.06.2013	Hanse Yachts AG Salinenstr. 22 17489 Greifswald	DC Fusepanel highcurrent Grounding Bus	H325 US	H325-7215-500-010 -00	Blatt: 8 von 10 Bl.
				Gezeichnet	P.Schmidtgen					
				Gepüft						
Rev.	Anderung	Datum	Name	Genehmigt						







00	new publication	18.06.2013	PS	Datum	18.06.2013	Hanse Yachts AG Salinenstr. 22 17489 Greifswald	DC Fusepanel lowcurrent permanent supplies	=	Blatt: 10			
				Gezeichnet	P.Schmidgen					H325 US	H325-7215-500-010 -00	von 10
				Geprüft								
Rev.	Anderung	Datum	Name	Genehmigt								